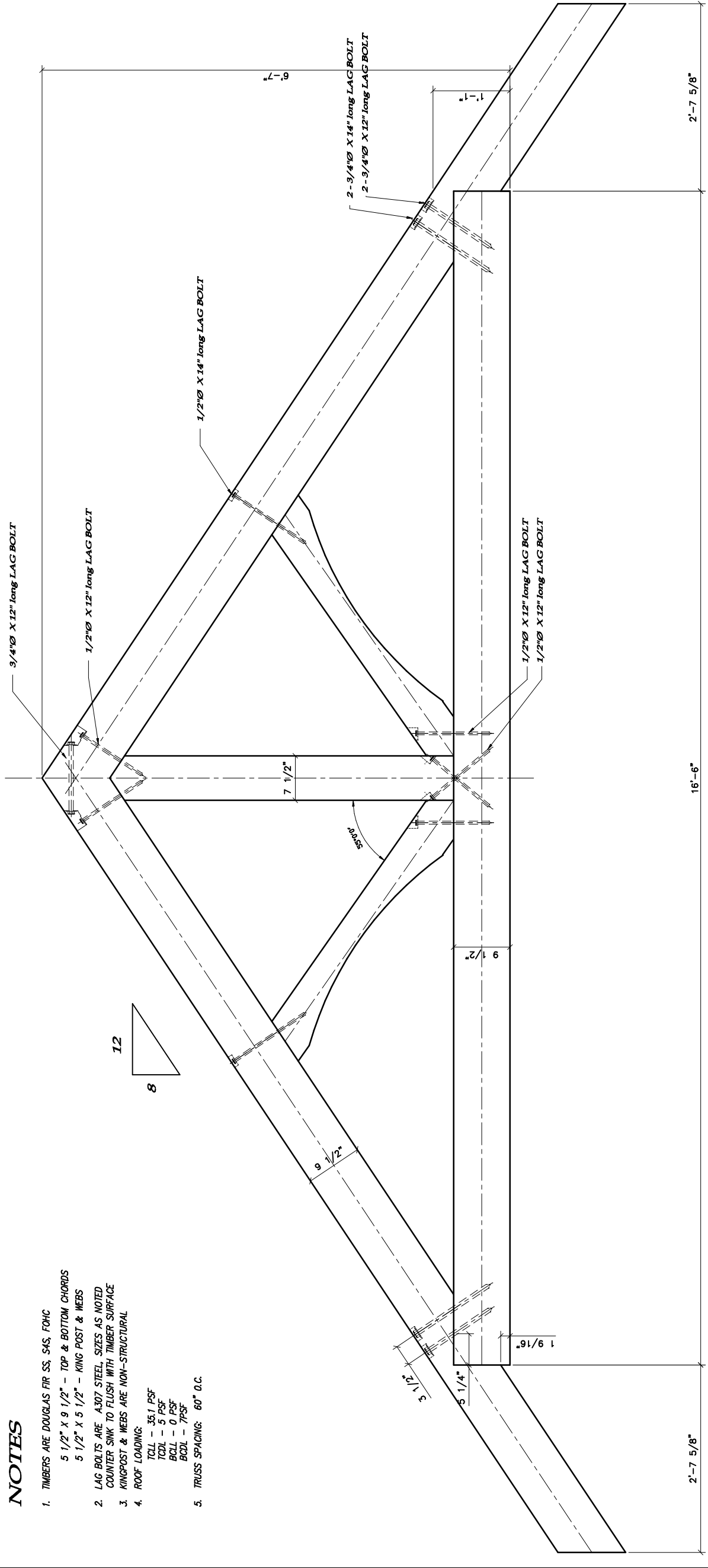


J06E089D DOHERTY - Lot 43 Salish Road
TMB1 - HEAVY TIMBER TRUSS



- NOTES**
- TIMBERS ARE DOUGLAS FIR SS, S4S, F0HC
 5 1/2" X 9 1/2" - TOP & BOTTOM CHORDS
 5 1/2" X 5 1/2" - KING POST & WEBS
 - LAG BOLTS ARE A307 STEEL. SIZES AS NOTED
 COUNTER SINK TO FLUSH WITH TIMBER SURFACE
 - KINGPOST & WEBS ARE NON-STRUCTURAL
 - ROOF LOADING:
 TOLL - 35.1 PSF
 TCDL - 5 PSF
 BOLL - 0 PSF
 BODL - 7PSF
 - TRUSS SPACING: 60" O.C.

TMB1 - TRUSS ELEVATION
 NTS

No.	REVISIONS	DATE



P.O. Box 70,
 Trans Canada Hwy.,
 Cobble Hill, B.C.
 V0R 1L0
 Tel: (250) 743-5584
 383-4737 (Victoria)
 669-5186 (Vancouver)
 245-5021 (Nanaimo)
 Toll Free: 1-800-667-3511

PROJECT/RESIDENCE: DOHERTY LOT 43 SALISH ROAD THE CLIFFS DUNCAN	DWG. TITLE: HEAVY TIMBER TRUSS
DESIGNER: CC	DRAWN BY: CC
DATE: AUG 25, 2006	SCALE: AS NOTED
LOADING (PSF): Floor LL Roof LL Roof D.L.	PERMIT #
SALES REP: PHIL C.	TRUSTRAN# J06E089D
JOB No.	DRAWING No. S1
REV.	