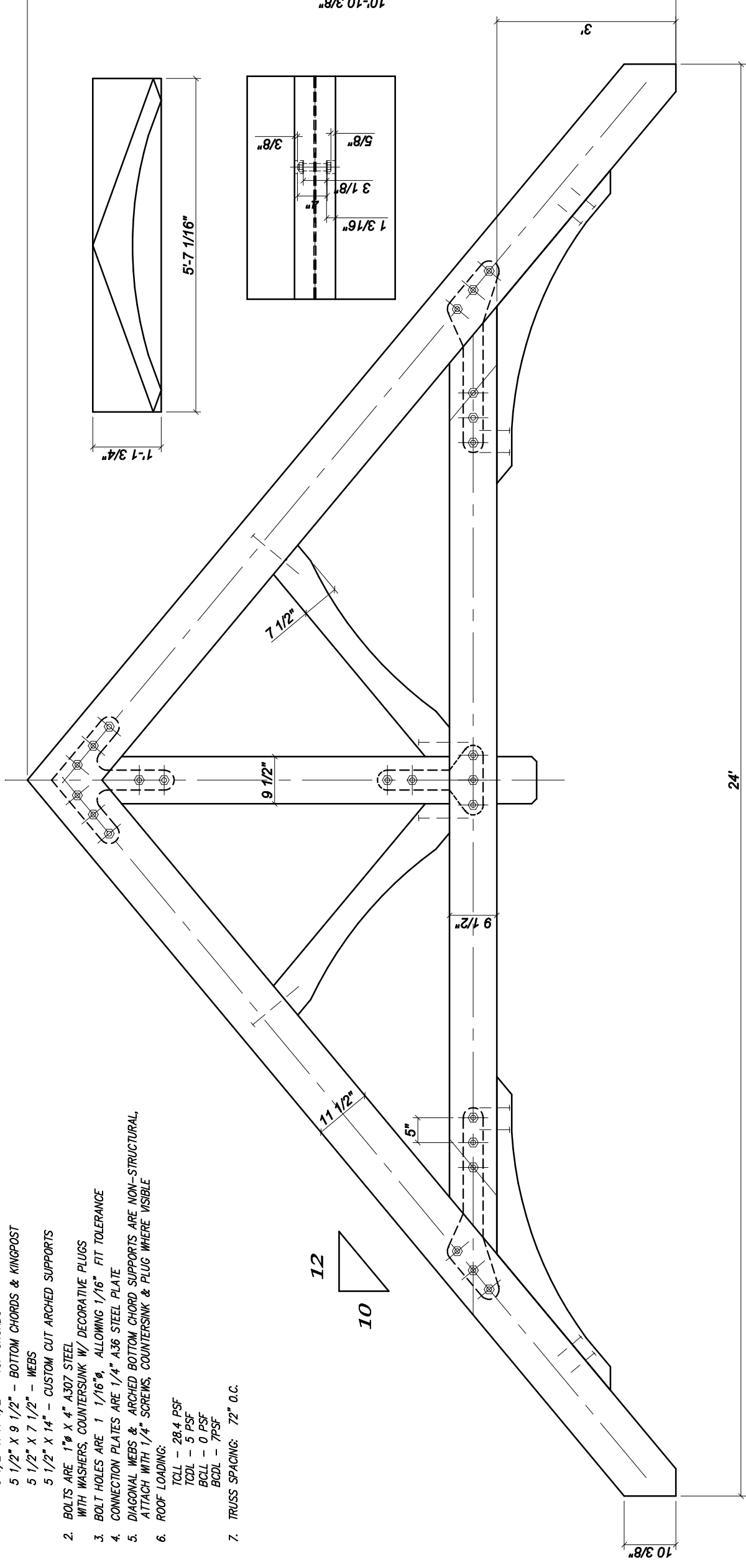


J06H113D ELMWORTH CONSTRUCTION

TMB1 - HEAVY TIMBER TRUSS

NOTES

- TIMBERS ARE DOUGLAS FIR SS, S4S, FOHC
 5 1/2" X 11 1/2" - TOP CHORDS
 5 1/2" X 9 1/2" - BOTTOM CHORDS & KINGPOST
 5 1/2" X 7 1/2" - WEBS
 5 1/2" X 14" - CUSTOM CUT ARCHED SUPPORTS
- BOLTS ARE 1" X 4" A307 STEEL
 WITH WASHERS, COUNTERSINK W/ DECORATIVE PLUGS
- BOLT HOLES ARE 1 1/16", ALLOWING 1/16" FIT TOLERANCE
- CONNECTION PLATES ARE 1/4" A36 STEEL PLATE
- DIAGONAL WEBS & ARCHED BOTTOM CHORD SUPPORTS ARE NON-STRUCTURAL,
 ATTACH WITH 1/4" SCREWS, COUNTERSINK & PLUG WHERE VISIBLE
- ROOF LOADING:
 TOLL - 28.4 PSF
 TCCL - 5 PSF
 BCCL - 0 PSF
 BCCL - 7PSF
- TRUSS SPACING: 72" O.C.



TMB1 - TRUSS ELEVATION

1/2" = 1'

No.	REVISIONS	DATE



P.O. Box 70,
 Trans Canada Hwy.,
 Cobble Hill, B.C.
 V0R 1L0
 Tel: (250) 743-5584
 383-4737 (Victoria)
 669-5186 (Vancouver)
 245-5021 (Nanaimo)
 Toll Free: 1-800-667-3511

PROJECT/RESIDENCE:

**ELM WORTH
 CONSTRUCTION**

MUJR RESIDENCE
 MAPLE BAY

DWG. TITLE: HEAVY TIMBER TRUSS

DESIGNER: CC

DRAWN BY: CC

DATE: JAN 9, 2007

SCALE: AS NOTED

LOADING (PSF): Floor D.L. Roof L.L. Roof D.L.

PERMIT #

SALES REP: PHIL C.

TRUSTAK# **J06H113D**

JOB No. DRAWING No. REV.

S1