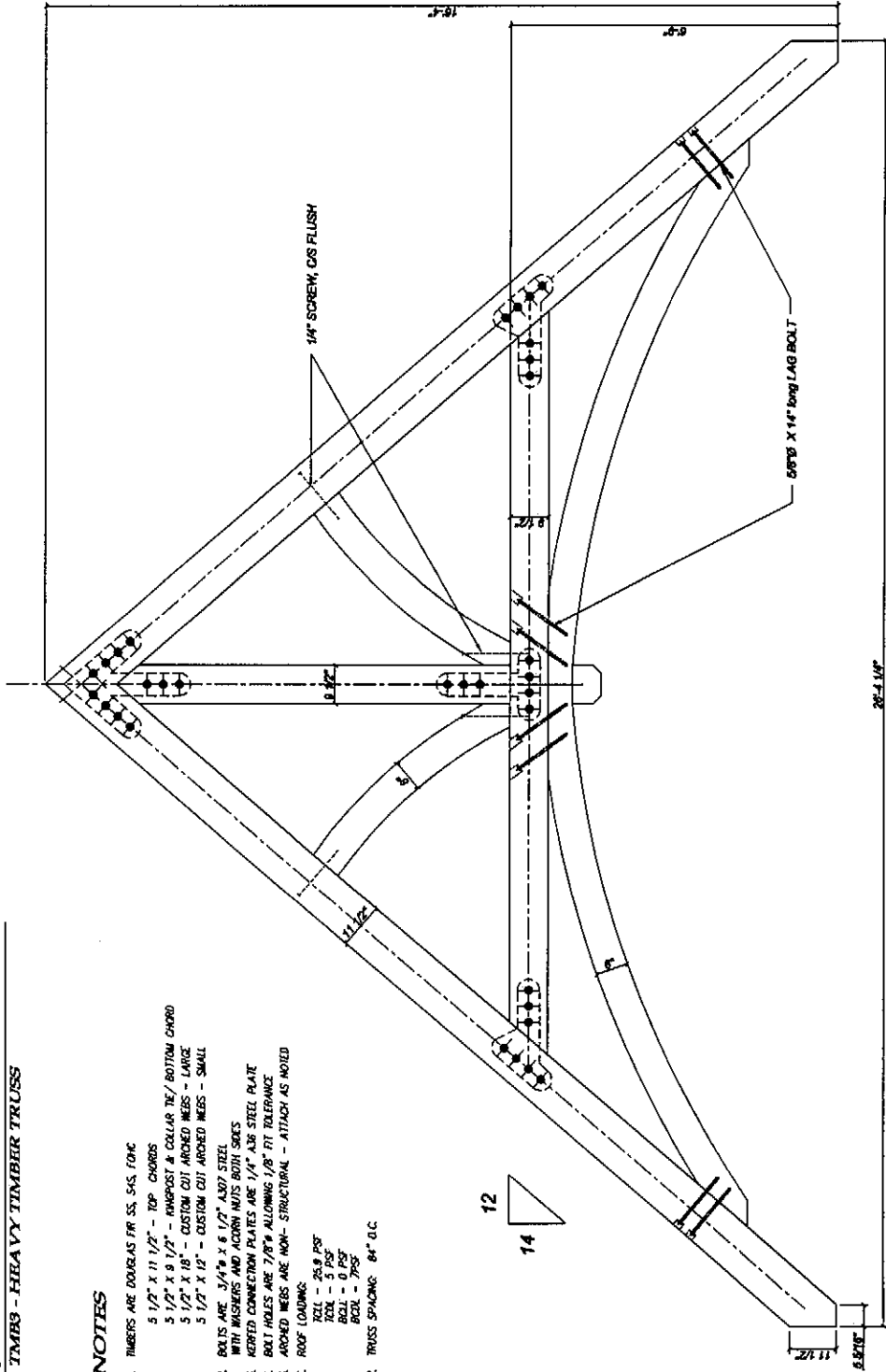


J05L003D LANCER - GARCIA
TMBS - HEAVY TIMBER TRUSS

NOTES

1. TIMBERS ARE DOUGLAS FIR SS, S4S, 10MC
 5 1/2" X 11 1/2" - TOP CHORDS
 5 1/2" X 9 1/2" - RINGPOST & COLLAR TIE/ BOTTOM CHORD
 5 1/2" X 18" - CUSTOM CUT ARCHED WEBS - LARGE
 5 1/2" X 12" - CUSTOM CUT ARCHED WEBS - SMALL
2. BOLTS ARE: 3/4" X 5 1/2" A307 STEEL
 WITH WASHERS AND CONN. PLATES BOTH SIZES
3. KEPT CONNECTION PLATES ARE 1/4" A36 STEEL PLATE
4. BOLT HOLES ARE 7/8" ALLOWING 1/8" FIT TOLERANCE.
5. ARCHED WEBS ARE NON-STRUCTURAL - ATTACH AS MOVED
6. ROOF LOADING:
 RCL - 25.9 PSF
 RCL - 5 PSF
 RCL - 1 PSF
 RCL - 7PSF
7. TRUSS SPACING: 84" O.C.



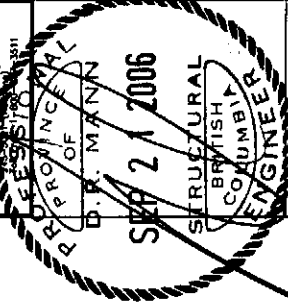
TMBS - TRUSS ELEVATION
NTS

No.	REVISIONS	DATE



P.O. Box 70, Hwy. 147
 Columbia, S.C. 29201
 803.733.1100

Tel: (803) 743-5844
 Fax: (803) 743-5844
 Email: info@pacifictruss.com



LANCER CONSTRUCTION

GARCIA RESIDENCE
 RAINBOW ROAD
 SALTSRING ISLAND

TRUSS TYPE: HEAVY TIMBER TRUSS

DESIGNER: CC

DRAWN BY: CC

DATE: SEPT 11, 2006

SCALE: NTS

LOCATION: [unclear] Hwy. 147, Hwy. 147, Hwy. 147

PROJECT #

SALES REP: PHIL C.

TRUSSING: J05L003D

JOB NO. 54

DATE: